

Development velo

Architectural
workshop

Проект
велосипедной
инфраструктуры
для г. Дубна
2-8 мая 2010

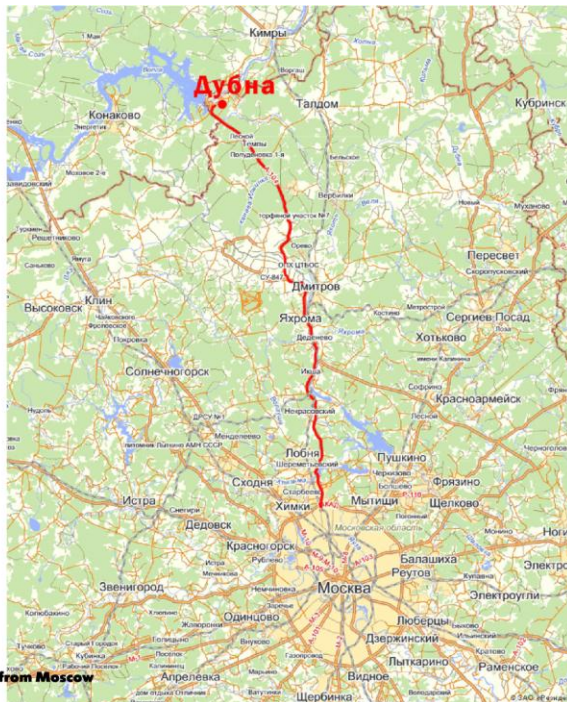
Why Dubna?



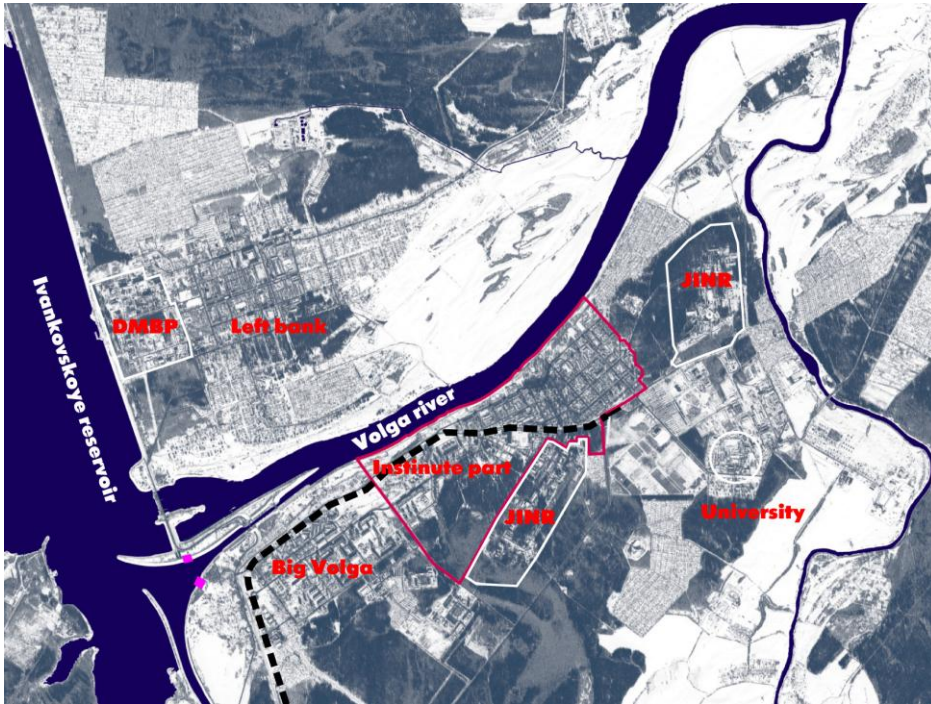
advanced research and development center
 new city for scientists and technical specialists



young scientists
In 1970, the USSR had more than 3 million students



Dubna
situated on the Volga river, 120 kilometers far from Moscow



small scale
max distance 3-4 km, max time to bicycle trip is 30 min



small car traffic
there was 9 private cars per 1000 people in Dubna, in 1970



flat landscape
city along the Volga River, surrounded by canals and reservoirs



potential for tourism
comfortable green environment along the river



potential for tourism
objects for tourism - from monument of soviet times...



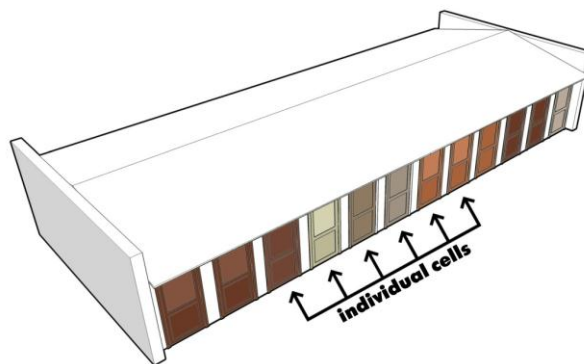
potential for tourism
...to strange artifacts in the surrounding forests



local events
annual bicycle event in Dubna

Old infrastructure

Small sheds in the residential blocks.
Perfect for storing bikes. It was built with first residential blocks of Dubna.
Each apartment has its own cell. Originally intended for the storage of firewood.



old infrastructure
small sheds



old infrastructure
small sheds



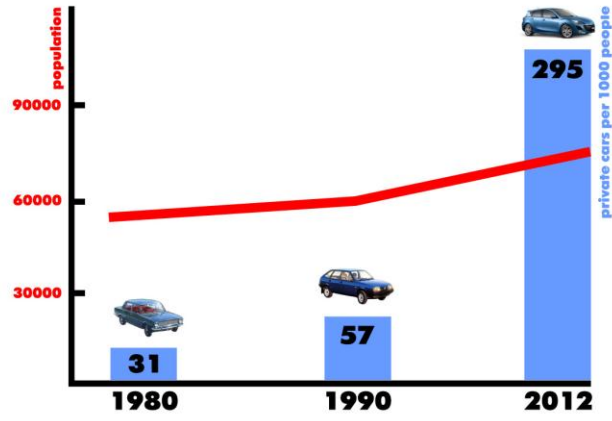
old infrastructure
bike parkings in front of the DMBP



old infrastructure
lack of storage



old infrastructure
lack of landscape design



statistics

significant increase number of private cars on the background of a small population growth

Locals

photos by Max Sher











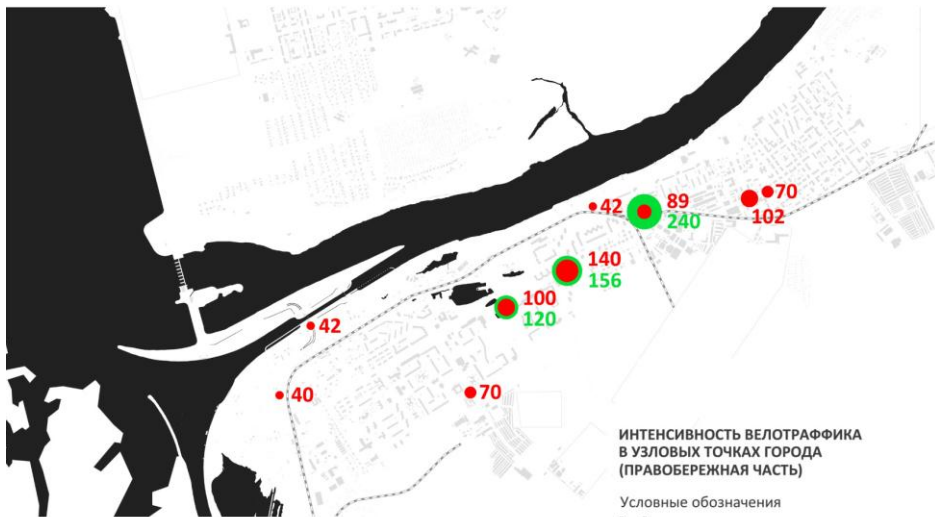




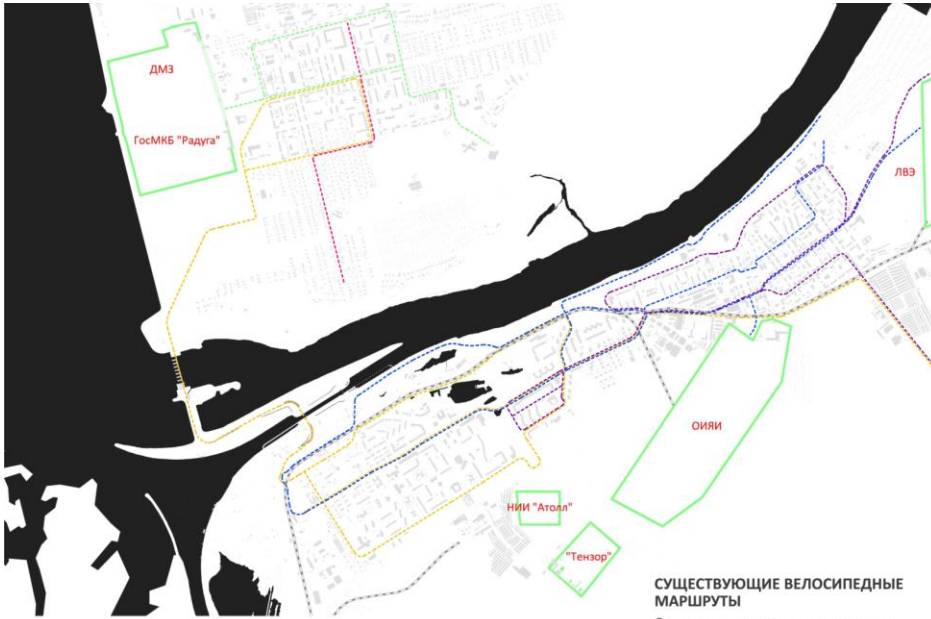
Workshop

Development velo

Architectural
workshop
Проект
велоципедной
инфраструктуры
для г. Дубна
2-8 мая 2010



analysis



СУЩЕСТВУЮЩИЕ ВЕЛОСИПЕДНЫЕ МАРШРУТЫ

Схема составлена по материалам анкетирования жителей города

analysis

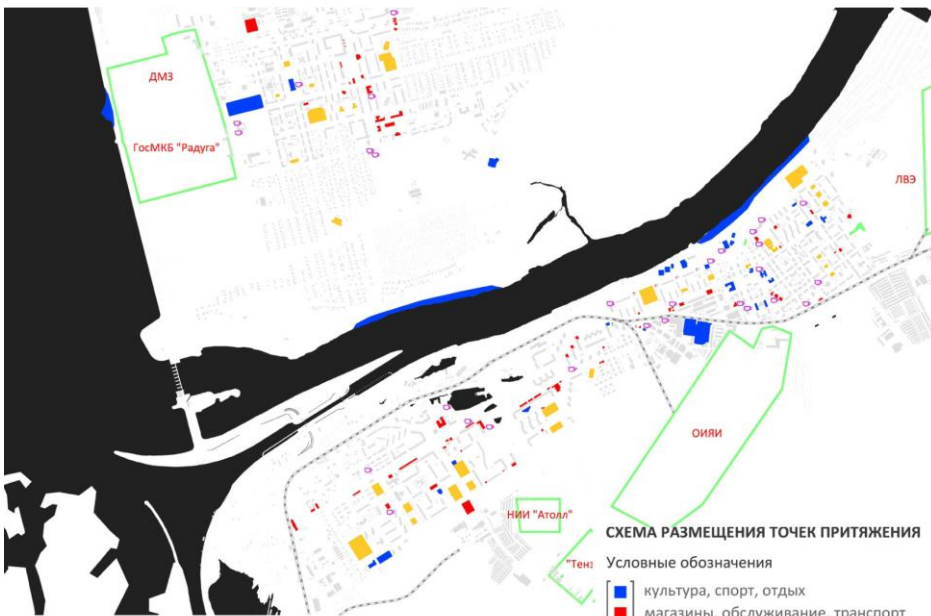
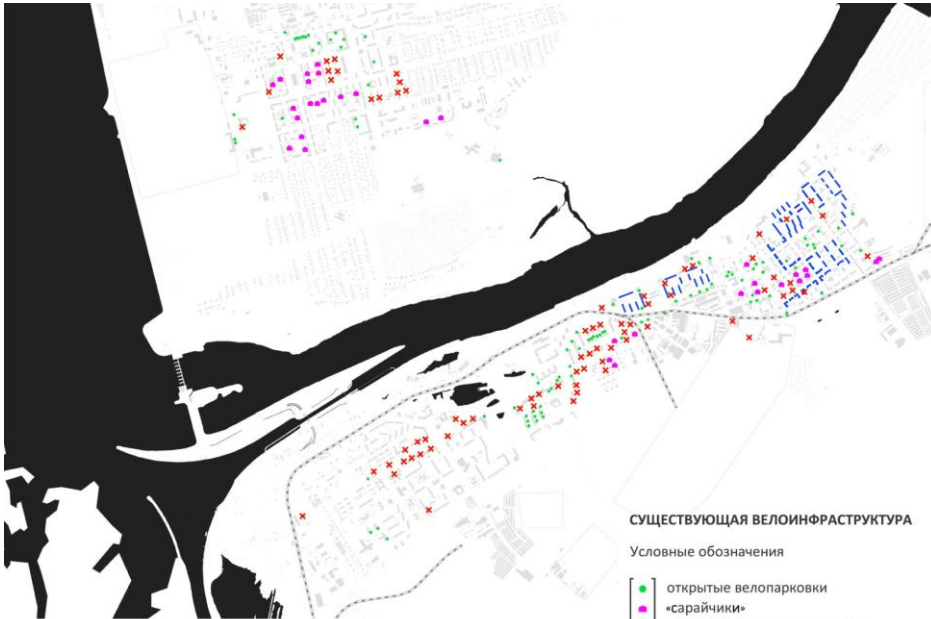


СХЕМА РАЗМЕЩЕНИЯ ТОЧЕК ПРИТЯЖЕНИЯ

Условные обозначения

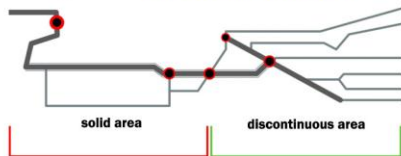
- культура, спорт, отдых
- магазины, обслуживание, транспорт
- школы, детские сады
- администрация, наука, производство
- кафе, рестораны

analysis



analysis

existing situation: **overcoming rapids**



- no alternative routes
- heavy traffic
- dangerous intersections
- developed network of paths
- low traffic density
- comfort for cyclists

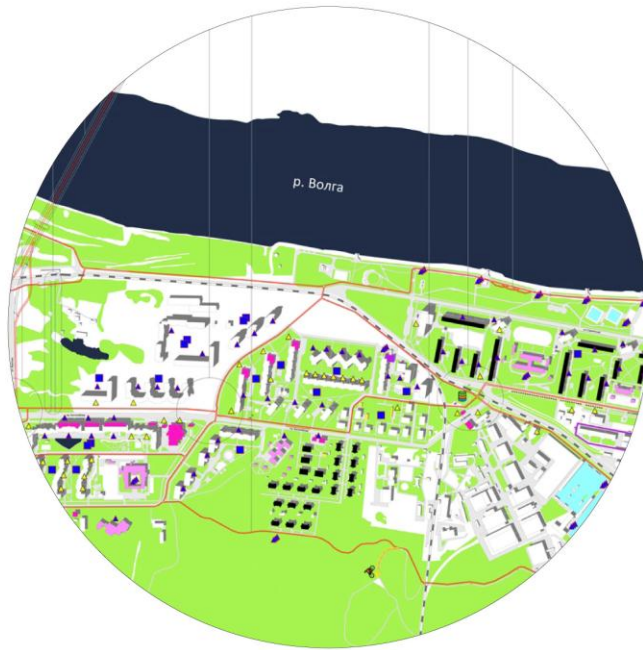


design proposal: **free flow**



- creation of convenient connections between areas of the city on 3 main lines
- the emergence of alternative traffic routes in the Big Volga area
- remove cycling flow from the main avenue
- unloading of dangerous crossroads

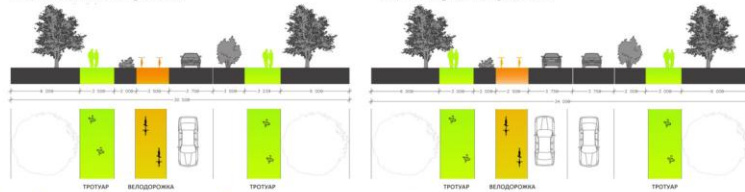
concept



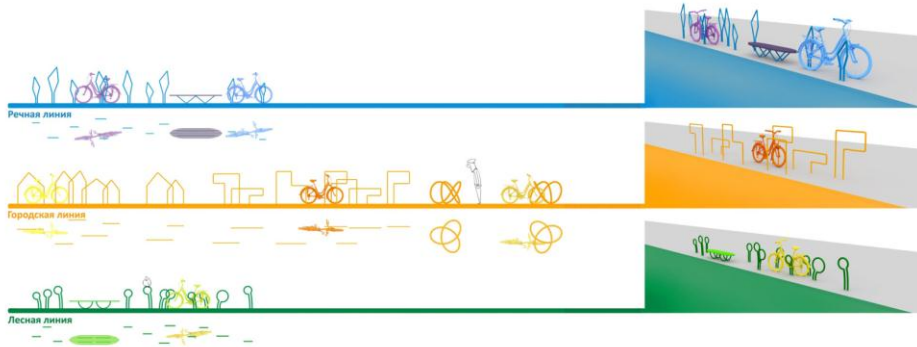
Sakharova str. profile



Dachnaya str. profile



solutions for main crossroads

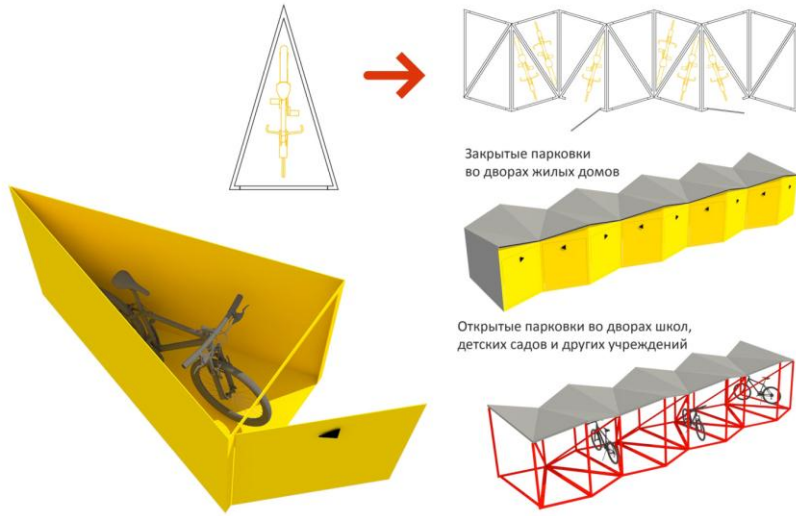


design ideas for bike parkings



design ideas for bike storages

Harmonica storage
An individual box for bike storage



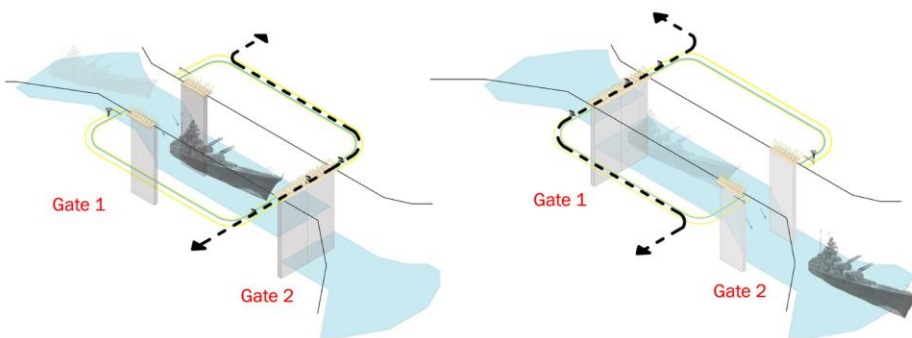
design ideas for bike storages



tunnel under the shipping lock
the only connection between the two parts of the city



tunnel under the shipping lock
great problem for cyclists and pedestrians



Shipping lock has double gates which open alternately due to the differences in water level

At the time when one of the gates are open, cyclists and pedestrians use the bridge on the another gate

solution for crossing the shipping lock

emblem of Dubna



+



=



prototype



prototype



public service announcement

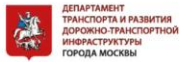


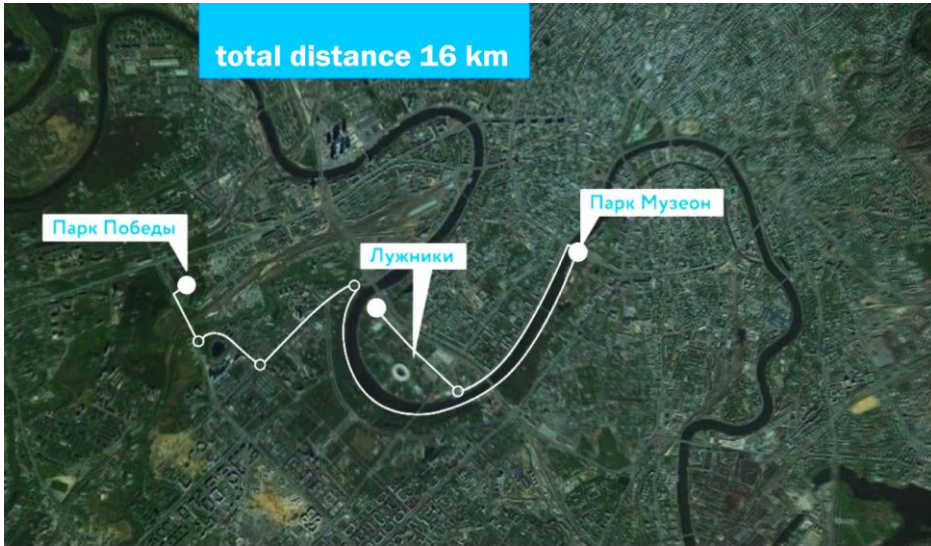
announcement of presentation in Dubna



outdoor presentation in Dubna

Work in progress overview

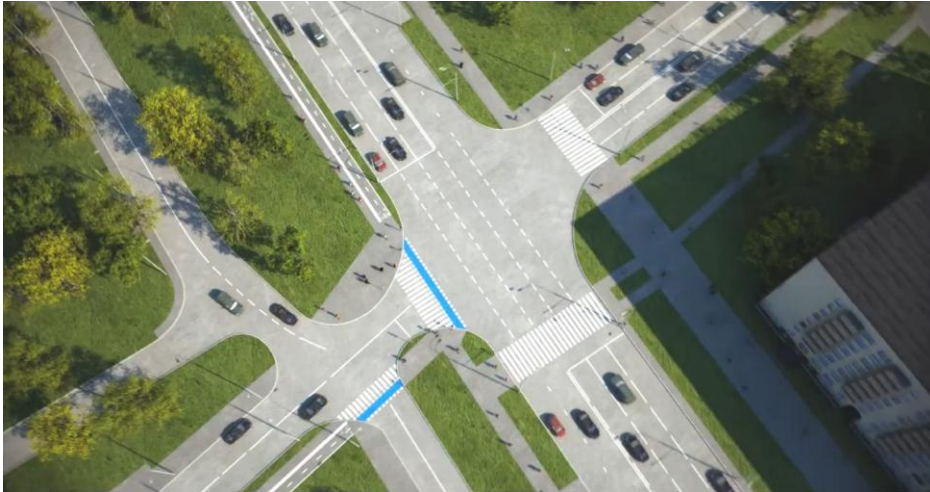




bicycle program of the Moscow Transportation Department
bicycle path through the city center



bicycle program of the Moscow Transportation Department
renders of bike lane and sidewalk along the avenue



bicycle program of the Moscow Transportation Department
renders of bike lane and sidewalk along the avenue

Принципиальное решение по участку

Существующая ситуация

Фрунзенская набережная-улица Тимура Фрунзе
 При возможности остановка "Улица Тимура Фрунзе" переносится, чтобы освободить место для велодорожки на узком участке набережной, спланированной в виде в направлении Фрунзенской набережной. Предлагается новый вариант поперечного профиля набережной с полосами озеленения между пешеходным тротуаром и велодорожкой, а также между велодорожкой и проезжей частью.

Условные обозначения:

- Тротуар
- Велодорожка
- Озеленение
- Кювет с растительными
- Пешеходный переход с островками безопасности
- Пешеходный переход

bicycle program of the Moscow Transportation Department
design proposals for bike lane and pedestrian route along the riverbank



bicycle program of the Moscow Transportation Department
renders of bike lane and sidewalk along the avenue



bicycle program of the Moscow Transportation Department
design of separating of pedestrian route and bike lane

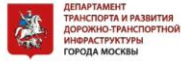


bicycle program of the Moscow Transportation Department
1200 bicycle parkings in the city

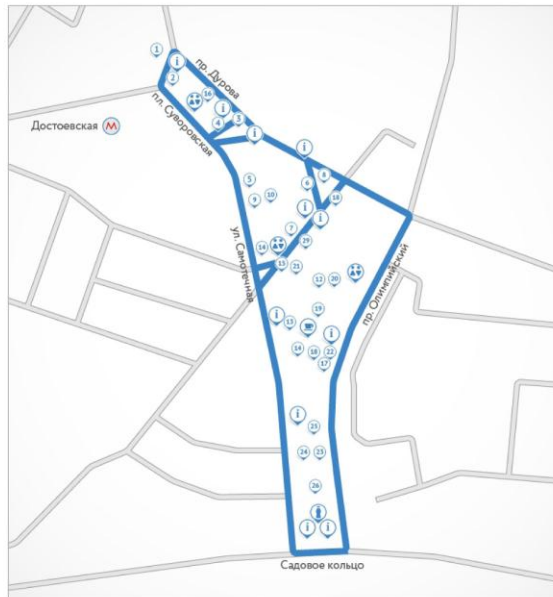


bicycle program of the Moscow Transportation Department
mount for bicycles on buses

recent bicycle event



Bicycle Boulevard



bicycle program of the Moscow Transportation Department
bicycle event in the city center, May 11th, 2013



bicycle program of the Moscow Transportation Department
bicycle event in the city center, May 11th, 2013



bicycle program of the Moscow Transportation Department
bicycle event in the city center, May 11th, 2013